

INTRO TORITO

SAXOFÓN CONTRALTO

$\text{♩} = 110$

4

7

12 $\text{♩} = 150$

16

20

25

30

36

41

8

SAXOFÓN CONTRALTO

53



57



61



74



79



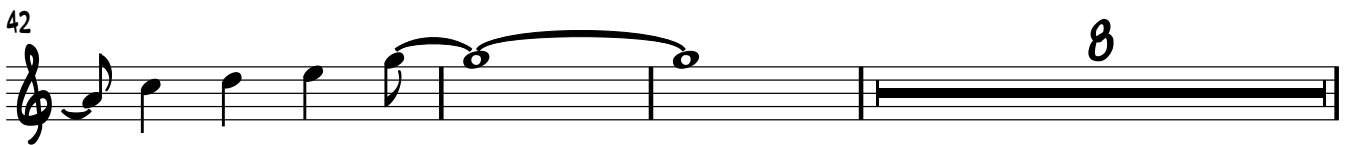
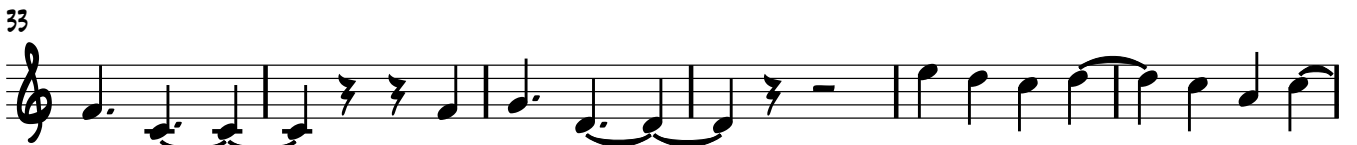
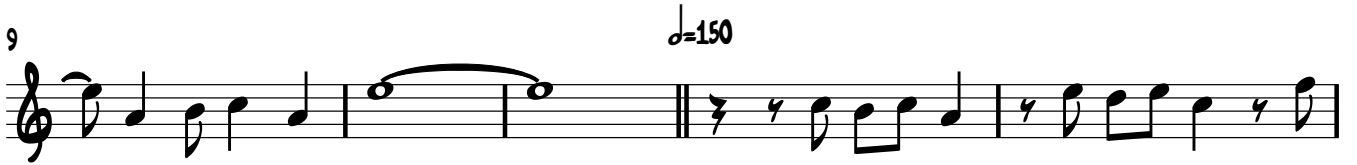
83



INTRO TORITO

SAXOFÓN TENOR

$\text{♩} = 110$



SAXOFÓN TENOR

53



First staff of music, measures 53-56. It begins with a treble clef and a key signature of two sharps (F# and C#). The melody starts with a quarter rest, followed by a quarter note B4, an eighth note G#4, and a quarter note A4. The line continues with eighth and quarter notes, ending with a quarter rest.

57



Second staff of music, measures 57-60. It continues the melody from the previous staff, maintaining the same rhythmic and melodic patterns.

61

9



Third staff of music, measures 61-63. Measure 61 is a whole rest. Measure 62 begins with a quarter rest, followed by quarter notes G#4, A4, and B4. Measure 63 continues with eighth notes, ending with a quarter rest.

74



Fourth staff of music, measures 64-68. Measures 64-66 contain eighth-note patterns. Measure 67 has a quarter rest. Measure 68 begins with a quarter rest, followed by quarter notes G#4, A4, and B4.

79



Fifth staff of music, measures 69-73. Measures 69-72 consist of eighth-note patterns. Measure 73 begins with a quarter rest, followed by quarter notes G#4, A4, and B4.

83

20



Sixth staff of music, measures 74-82. Measures 74-81 consist of eighth-note patterns. Measure 82 begins with a quarter rest, followed by quarter notes G#4, A4, and B4. The staff ends with a double bar line.